

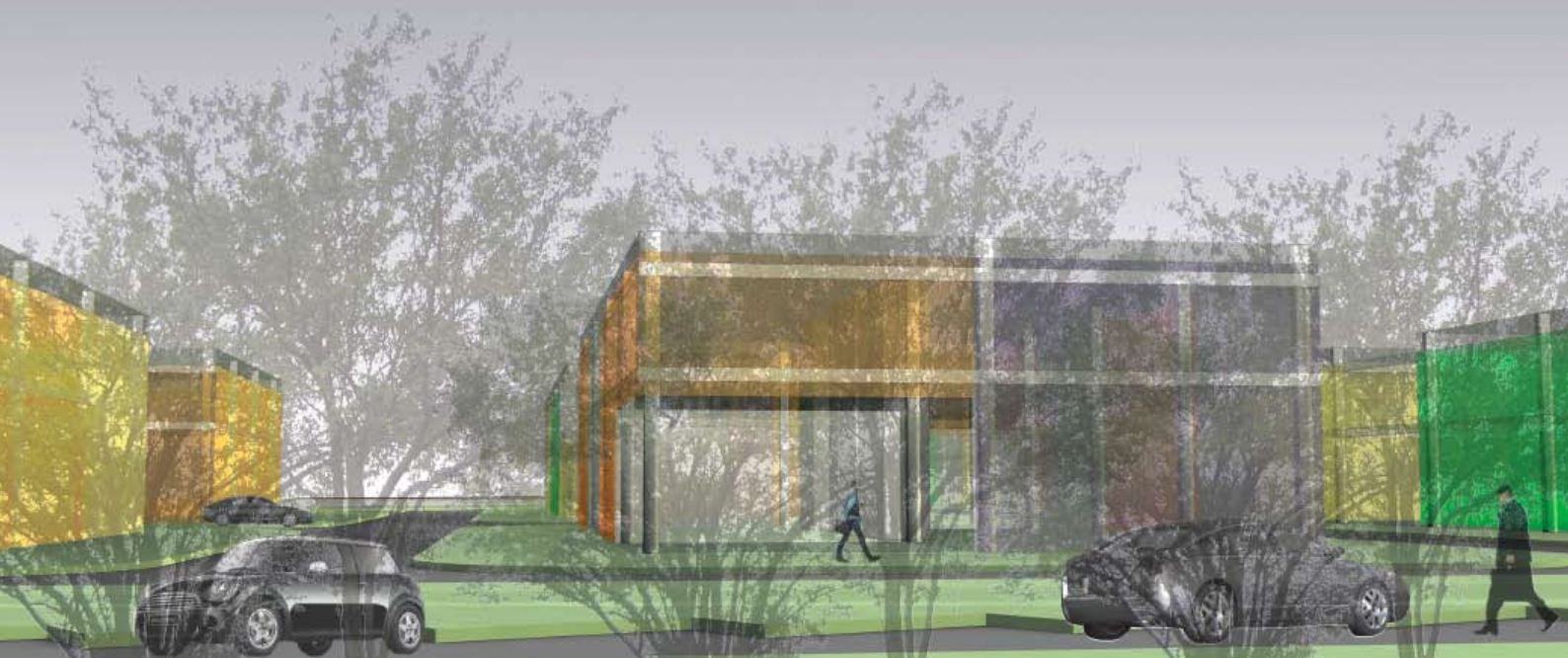
# Tojnice, Vrhnika



The land of **Tojnice** is located on the south-western area of the industrial zone of Vrhnika, lying between the Ljubljana-Vrhnika highway in the north, Ljubljanica river in the south and the recycling center on the east. The area is accessed from the south from the Poti na Tojnice road that leads along the left bank of Ljubljanica.

The total land size on which the business-industrial centre is to be constructed is 41.000 square metres.

# Tojnice, Vrhnika



numbers and facts	asset type	industrial/office development
	land size	40.874 m <sup>2</sup>
	size of development	24.000 m <sup>2</sup>
	year of purchase of the land	2008
	sales value of the completed project	EUR 10.000.000
	planned construction start	2010
	percent completed (cost based)	35%
	current debt/equity	0%

